

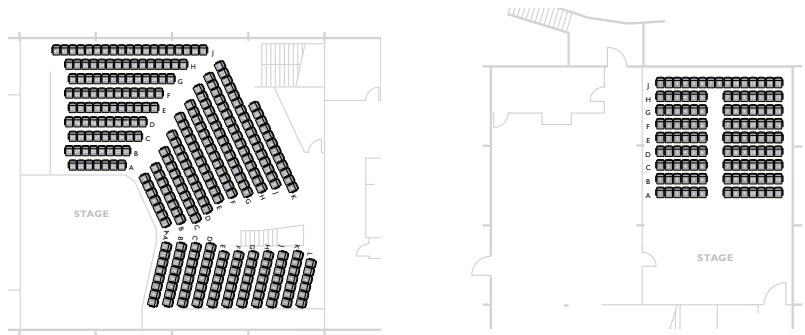
# Celebrations and Events



## SUBIACO ARTS CENTRE

Only 10 minutes west of Perth's central business district, the Subiaco Arts Centre is a multi-purpose venue surrounded by magnificent gardens. Regarded as a performing arts venue, the Centre also offers a diverse range of rooms for hire.

Our team can tailor the perfect package for your special event. We view ourselves as your partner in creating a successful event and look forward to ensuring we leave a positive and lasting impression with your guests.

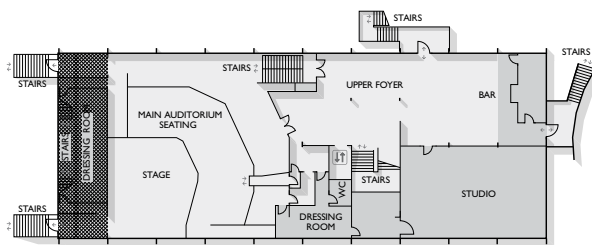


### Main Auditorium

The Main Auditorium is well known for its superb acoustics and corner stage. It features raked seating for up to 305 people offering unobstructed views from every seat.

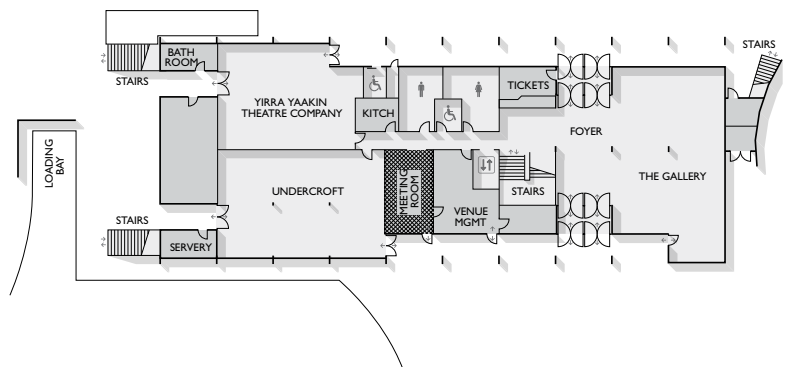
### The Studio

Featuring floor to ceiling windows and wooden floors, this stunning space can be transformed into a seminar, cocktail reception, themed event or sit-down function while looking over glorious garden surroundings. To maximize capacity, why not extend your function into our Bar Foyer?



### Bar Foyer

Located on the first floor of the Centre and overlooking the gardens, the Bar Foyer is a fully licensed area primarily used for pre-show, interval and post show refreshments. In conjunction with a conference, it is also ideal for tea breaks, lunches and sundowners.



### The Undercroft

This unique area has floor-to ceiling windows offering natural day light. It is most often used for informal workshops, meetings, product launches and sundowners.

### The Gallery

Versatile, light and bright, this room is the perfect space for art exhibitions, dinners, cocktail parties, meetings and product launches.



## Catering

Our caterer of choice is Beaumonde Catering however you are free to choose a catering company that meets the needs of your function and our approval. We will require the details of your caterer at the time of confirmation.

## Security

The cost of security will be included in your quotation. All events involving alcohol require one security guard per 100 people.

## Insurance

A certificate of public liability insurance is required from businesses and organisations hiring the venue.

## Liquor Licence

The Centre is a fully licensed venue. Bringing your own alcohol on the premises is not permitted.

## Australian Performing Rights Association (APRA)

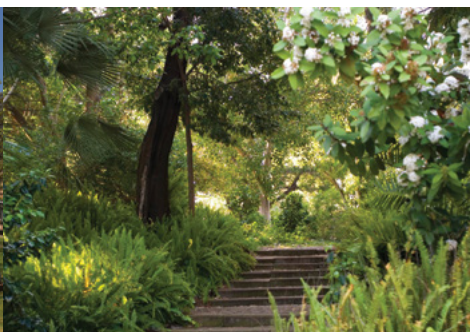
The Centre holds an APRA license for background music. Ticketed events involving music and non-ticketed events where entertainment costs exceed \$2,000 will require an additional APRA license.

## Conditions

- Prices may be subject to change without notice
- All events must finish by midnight with pack-down or bump-out completed by 1am
- Public holiday rates are available on request
- All catering, service, linen, flowers, décor, hire of additional equipment and tables, musicians and special audio visual requirements are at an additional cost to the hirer
- A venue hire contract is to be signed and returned, along with the booking deposit in order for your function to be confirmed

Venue	Dimensions (m)	Area (m2)	Ceiling height (m)	Theatre	Cocktail	Dinner	Boardroom	Max Capacity
Main Auditorium				305				305
Main stage	9.2 x 7.2	72	4.8		70	50		
The Studio	13.7 x 8.6	117.8	4.8	119	119	80	30	125
Bar Foyer	16.6 x 6.3	140.5	2.3		130	50		
Theatre Gardens				500				
The Undercroft	14.1 x 8.6	121	2.2	75	119	80		119
The Gallery	16.4 x 9.6	154	2.2	75	150	80	20	150
Rehearsal Room	12.7 x 8.7	110	2.2	80	89	50	30	89

\* Dinner and cocktail capacities will reduce where a dance floor is required. Area (m2) indicates useable floor space.



SUBIACO ARTS CENTRE

*For your next event contact*

Subiaco Arts Centre Event Coordinator  
 +61 8 9380 3000  
 subifunctions@ptt.wa.gov.au

